

Job Information

Project Name		Type
Location		
Quantity		Date
Contact/Phone		

Type IC 4" Slim LED Recessed Gimbal Light

DL-10W

Features

Housing

Durable die casting aluminum lamp housing with excellent heat dissipation, provide maximum airflow for the SMD LED light source.

LED Characteristics

This fixture contains a LM80 rated SMD LED module that offer high light color uniformity, 9 watts up to 800 lumens; Available in 2700K 3000K, 4000K, 5000K OR 6000K colour temperature.

Dimming

This gimbal light is dimmable from 100% down to 5% smoothly and no flicker, works with the majority of industry standard triac dimmers like Lutron/leviton, etc. Please contact us for compatible dimmer list.

Beam Spread

The fixture lens provides 45° beam spread, and our special design makes it possible for rotatable smoothly and 45° tilted, the final users can adjust the light direction easily.

Environment

- Suitable for dry/damp locations.
- Approved for direct contact with insulation. (Type IC)

Mounting

Includes two spring loaded clips to attached to any ceiling material. Easy recessed installation without needing a stand pot light can.

LED Driver

Iron metal driver box with junction box and a reliable constant current dimmable class II electronic LED driver inside.

Quick Connect push-in terminals
Three "Quick connect" push-in terminals for fast and easy wiring.

Operating Temperature
-20°C~40°C (-4°F~104°F)

Specifications

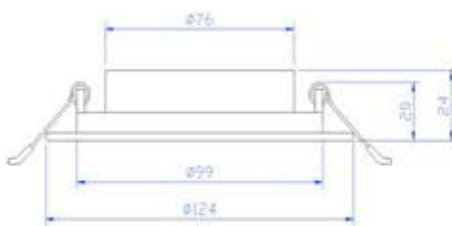
Cut-Out Size	4 inch
Wattage	9 watts
Input Voltage Range	AC120V, 60Hz
Light Source	SMD2835
Color temperature	27K 30K 40K 50K 60K
Beam Angle	45°
Lumens Output	2700K 670lm 3000K 760lm 4000K 845lm 5000K 830lm 6000K 805lm
Lumen Efficiency	88 lm/w
Halogen Equivalent	75watts
Dimmable	Yes, 100%-5%
Dimming Tech	Triac dimming
Certification	cETLus
Power Factor	>0.9
Produced Life	70% Light Output at 50,000 Hours
Warranty	3 years
Approved Location	Insulated Ceiling & Damp Locations
IC Rated	Yes
Air Tight	Yes



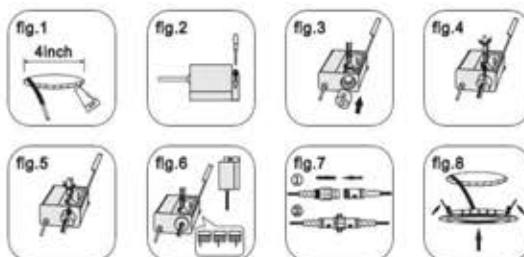
Detailed Pictures



Dimensions & Installation



Hole cut: 4" (102mm)



Ordering Guide

DL-10W - Color Temperature - Housing Color

2700K
3000K
4000K
5000K
6000K

WH: White
BK: Black

